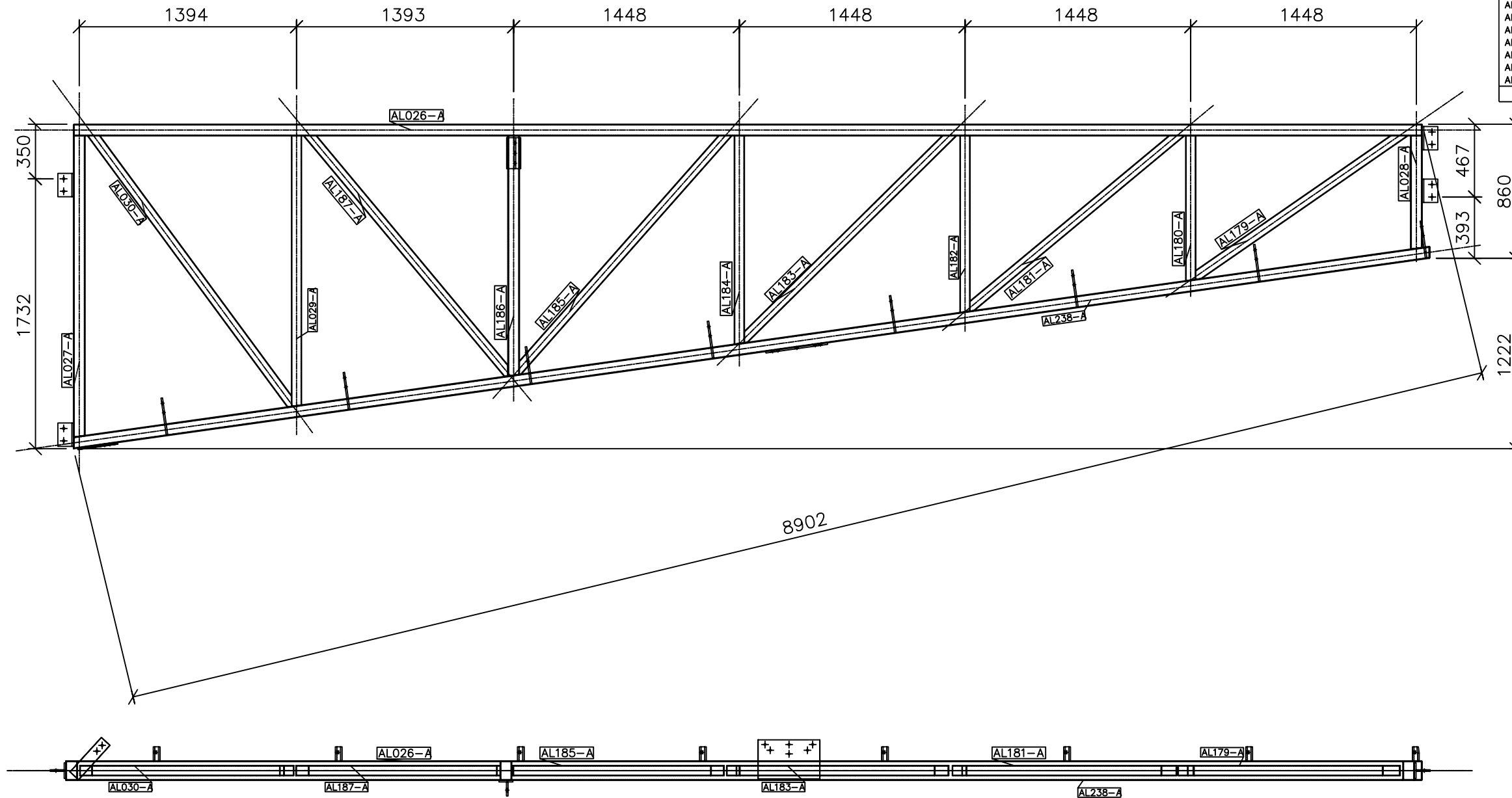



| SHOP MATERIAL LIST FOR 1 ASSEMBLY | | | | | | |
|-----------------------------------|---------------|-------|-----------|----|------------|-----------|
| MARK | STOCK | GRADE | LENGTH MM | No | SURFACE M2 | WEIGHT KG |
| AL023 | 90X10FLAT | 300+ | 200 | 1 | 0.04 | 1.4 |
| AL024 | 90X10FLAT | 300+ | 200 | 1 | 0.04 | 1.4 |
| AL029 | 70X5FLAT | 300+ | 120 | 4 | 0.07 | 1.3 |
| AL030 | 100X10FLAT | 300+ | 150 | 4 | 0.14 | 4.7 |
| AL031 | 90X10FLAT | 300+ | 150 | 4 | 0.13 | 4.2 |
| AL055 | 90X10FLAT | 300+ | 240 | 1 | 0.05 | 1.6 |
| AL059 | 75X10FLAT | 300+ | 300 | 1 | 0.05 | 1.8 |
| AL157 | 90X10FLAT | 300+ | 240 | 7 | 0.35 | 11.9 |
| AL1260 | 250X10FLAT | 300+ | 400 | 1 | 0.21 | 7.8 |
| AL026-A | 125X75X5.0RHS | 300+ | 8646 | 1 | 3.35 | 122.8 |
| AL027-A | 125X75X5.0RHS | 300+ | 1932 | 1 | 0.75 | 27.4 |
| AL028-A | 125X75X5.0RHS | 300+ | 727 | 1 | 0.28 | 10.3 |
| AL029-A | 65X3.0SHS | 300+ | 1736 | 1 | 0.44 | 9.8 |
| AL030-A | 65X3.0SHS | 300+ | 2174 | 1 | 0.54 | 12.3 |
| AL179-A | 65X3.0SHS | 300+ | 1643 | 1 | 0.40 | 9.3 |
| AL180-A | 65X3.0SHS | 300+ | 929 | 1 | 0.23 | 5.3 |
| AL181-A | 65X3.0SHS | 300+ | 1777 | 1 | 0.43 | 10.1 |
| AL182-A | 65X3.0SHS | 300+ | 1133 | 1 | 0.29 | 6.4 |
| AL183-A | 65X3.0SHS | 300+ | 1901 | 1 | 0.47 | 10.8 |
| AL184-A | 65X3.0SHS | 300+ | 1336 | 1 | 0.34 | 7.6 |
| AL185-A | 65X3.0SHS | 300+ | 2049 | 1 | 0.50 | 11.6 |
| AL186-A | 125X75X5.0RHS | 300+ | 1541 | 1 | 0.60 | 21.9 |
| AL187-A | 65X3.0SHS | 300+ | 2023 | 1 | 0.50 | 11.4 |
| AL238-A | 125X75X5.0RHS | 300+ | 8791 | 1 | 3.40 | 124.8 |
| TOTAL | | | | | 13.59 | 438.0 |



1 REQ'D AS DRAWN A-010

STRUCAD

| | | | |
|---|-------|--|----------------|
|  | | CLIENT: XXXX | |
| | | PROJECT: COOLBELLUP COMMUNITY SCHOOL ADMINISTRATION/LIBRARY BLOCK COOLBELLUP | |
| REV | SCALE | JOB NUMBER | DRAWING NUMBER |
| 0 | NTS | XXXX | A-010 |
| DRAWN BY: | | DATE: | |